

MINI-MANTIS II

H-Beam Cutting Machine

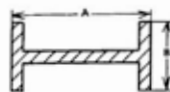
Features and Benefits

- **Three rail types**
Makes web and flange cutting easy and efficient.
- **Adjustable rail and rack bar angle**
Allows diagonal cuts on web and flange.
- **Flame pre-set function**
Set preheat only once; saves time and gas.
- **4-Way jog direction control**
Controls both flange and web cutting with one direction switch.
- **Long flange bar option**
For cutting of longer flanges up to 700 mm.
- **Lightweight and portable**
Easy to carry and use in tight spaces.

Semi-automated H-beam cutting

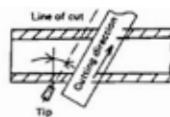
Ideal for H-beam and I-beam bevelling

The Mini-Mantis II provides straight or angled cuts that are clean and sharp. Two motors drives the torch for both web and flange cutting. There is no need to turn and mark the workpiece.

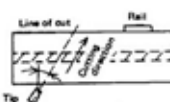


Right angle cutting capacity

- Web cutting ("A" in the diagram)
150 - 600 mm : 600-ST rail
150 - 900 mm : 900-ST rail
900 - 1500 mm : 1500-ST rail



- Flange cutting ("B" in the diagram)
150 - 400 mm : Standard
150 - 700 mm : With optional slide bar 1200L



Angled cutting capacity

- 30° maximum for both web and flange cutting

Cutting Machines



The Mini-Mantis II is a semi-automatic gas cutting unit for rapid and precise cutting of H-beams. The rotatable torch angle allows bevelling cuts on flange and web. The vertical unit can be tilted for cutting flanges in angled directions. KOIKE's quality construction ensures durability and trouble-free operation. The Mini-Mantis II is an economical, efficient and compact gas cutting machine for H-beam steel.

Optional accessories

| Accessory | Stock # | Description |
|---------------------------|---------|---|
| 600-ST rail | 90234 | 600 mm effective cutting , rail lengths 1100 mm |
| 900-ST rail | 90235 | 900 mm effective cutting , rail lengths 1400 mm |
| 1500-ST rail | 90136 | 1500 mm effective cutting, rail lengths 2100 mm |
| Slide bar 1200L | 32027 | 700 mm vertical stroke for flange cutting |
| Transformer AC230V - 110V | 90100 | For 110V models |

Specification

Mini-Mantis II ST Set

| | |
|---------------------------------|-------------------------|
| Cutting thickness | 5 - 30 mm |
| Cutting speed | 100 - 700 mm |
| Bevel angle | 0 ~ 35° |
| Speed control | Dial operation |
| Driving method | Web: Friction roller |
| | Flange: Rack and Pinion |
| Input power | AC 110V |
| Dimension (incl. vertical unit) | L350 x W350 x H880 mm |
| Weight | 15 kg |

Types

| Model | Stock # |
|----------------------------|---------|
| Mini-Mantis II ST 110V Set | 90131 |

Scope of delivery

| |
|--------------------------------------|
| Machine body |
| ST-400 Vertical unit with torch unit |
| Power cable |
| Standard tool set |
| Operation manual |
| Cutting nozzles |